

# Samantha's Bushel to Barnyard Ag Report

## Upcoming Events

### September

23rd - First Day of Fall  
27th - Fall Ag Producers  
Workshop  
29th - Understanding  
Carbon Credits

### October

3rd - Private Applicator Training  
13th - Carr Ranch Gathering

### November

8th - Lonestar Healthy Stream

## In this Newsletter

### Gardening & Lawn Care

-Monthly Tips

-Stressed Trees

### Fall Armyworms & Other Pasture Pests

### Upcoming Events

You can find online courses and AgriLife  
Extension publications on [our online bookstore](#).

## Wilson County Extension Office

1420 3rd Street, Ste. 300  
Floresville, Texas 78114

<http://wilson.agrilife.org>

*Samantha Shannon*

County Extension Agent  
Agriculture & Natural Resources

830-393-7357

[samantha.shannon@ag.tamu.edu](mailto:samantha.shannon@ag.tamu.edu)



"Texas A&M AgriLife Extension provides equal opportunities in its programs and employment to all persons, regardless of race, color, sex, religion, national origin, disability, age, genetic information, veteran status, sexual orientation, or gender identity."

"The Texas A&M University System, U.S. Department of Agriculture, and the County Commissioners Courts of Texas Cooperating"

# Gardening & Lawn Care

## September

\*Plant wildflower mixes now to ensure your flowers bloom in the spring.

\*Add more soil and/or till in mulch into your garden.

\*If you are wanting to plant trees this fall now is good time to start doing your homework to figure out what kind of tree you need/want for your landscaping.



## October

\*Apply pre-emergence herbicides for winter weed control over your lawn.

\*Continue to water & fertilize vegetables at a slower frequency.

**Understand your gardens and lawns are stressed. We have had 50plus days of 100 degree weather and we are DRY! We are seeing plants do things we don't normally see as a way to survive the heat.**

*While shopping these next couple of months look for these fruits & vegetables which should be in season now!*

*Produce  
Spotlight*

Apples  
Bell Peppers  
Cabbage  
Oranges  
Squash

Carrots  
Celery  
Cucumbers  
Greens  
Tomatoes



## Stressed Trees

Most, if not all of our trees are under some sort of stress. That is simply the reality of the drought we are currently in. Trees, however, are smart and will do things now that we don't normally see them do in an attempt to reduce the energy they expend. This can include losing some of their leaves or slowing down their normal functions. One of the best things you can do is water trees that are stressed.

### EFFECTS OF DROUGHT ON TREES



\*Symptoms can include wilting/drooping foliage, yellowing leaves, and burnt leaf tips and edges. It could be possible for live oak trees to not "leaf out" completely in the spring and are now losing their leaves to conserve energy and resources for the tree.

\*A thin canopy can be caused by multiple issues, it is best to get a proper diagnosis before starting a treatment.



*Should it start to rain, I want you all to be prepared for our timely "friends".*

# Fall Armyworms

*Worms in agriculture production isn't always a good thing. Worms are tricky and it is key for producers to identify what we are dealing with.*

## Identification

Depending on the stage of growth the larvae is in, it can be difficult to identify the type of worm. Armyworms can be green, brown or black with white/yellowish lines running from head to tail. Four black spots to make a square on the top, near the back of the caterpillar and an inverted "Y" on the face are common characteristics of Fall Armyworms.



## Management

Outbreaks are known to occur after rains in pastures and hay fields which create favorable conditions for the larvae. These caterpillars are looking for the high-quality fields first, those that have been fertilized and managed better than those less fertilized. Look for Fall Armyworms during the evening and early morning, when the temperature is more likely to be slightly cooler.

## Control Options

There are different insecticide options available for attempted control of Armyworms. Pyrethroid insecticides have several products and are commonly used in pasture and hay fields. It is possible to need frequent treatments because of the short residual the insecticide has.



A more detailed breakdown of the insecticide options available can be found [here](#). Remember, it is the law to read and follow label instructions.

*Same for these guys!*

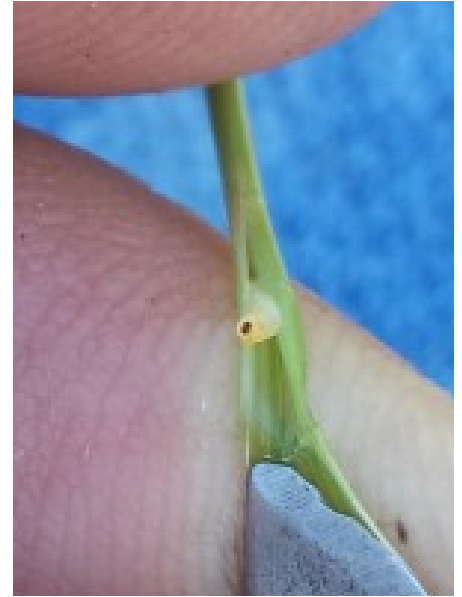
# Other Pasture Pests

## Bermudagrass Stem Maggots

Found in bermudagrass forages, the fly will lay its eggs in the stem of bermudagrass. Once hatched, the maggot moves and consumes the plant material from inside.

Producers are likely to see the damage before they see the maggots. If fields are being grazed, you may not see the results like a field being left alone.

A pyrethroid labeled for bermudagrass can help control bermudagrass stem maggots.



## Grasshoppers

Grasshoppers are known to be persistent from late spring until late fall/winter. It is important to constantly monitor grasshoppers if they are in your pasture. While a few grasshoppers here and there are normal, there is a threshold producers should remain mindful of.



Along Field Margin	21 or more adult grasshoppers
In the field	8 or more adult grasshoppers

**A complete article with more information can be found [here!](#)**



# Upcoming Program



**5:30pm Registration w/ Wilson County Farm Bureau**

**6:00pm Welcome & Introductions, President of Wilson County Farm Bureau & Wilson County Extension Agent**  
Mr. Edward Hrna and Samantha Shannon

**Fall 2023 Forage & Soil Results**  
Samantha Shannon, Wilson County CEA

**Right to Farm, Proposition 1 - November Ballot**  
Texas Farm Bureau Representative

**Post Emergent Options for Pasture & Rangelands**  
Brian Carr, Branch Manager, Helena Agri-Enterprises

**One (1) CEU will be Offered**

**Please RSVP to the Wilson County  
AgriLife Extension Office  
(830) 393-7357  
by Monday, September 25th.**





# Upcoming Program

## **UNDERSTANDING CARBON CREDITS**

**Educational Workshop**

**September 29, 2023**

**Location: 25 E. 5<sup>th</sup> Street, Leming, TX  
Atascosa County Gillespie Annex  
Texas A&M AgriLife Extension Office**

**9:30 a.m. Registration  
Program time 10:00 a.m. to 2:00 p.m.**

**\$15.00 Registration Fee**



**Topics**  
**What is Carbon?**



**What is Carbon Credit Capture, What is the Need For It, and How Does It Work?**

**Current Carbon Credit Policies/ Laws**

**Legal Consideration of Soil Carbon Leasing and Contracts**

**Farmer/ Rancher/ Rangeland Discussion on Carbon Credit**

**What does a contract look like and what is the length of a basic contract?**

For more information, contact:

Texas A&M AgriLife Extension Service of Atascosa County at 830-569-0034

RSVP by September 22, 2023



# Upcoming Program

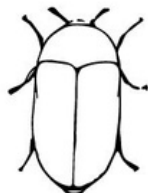
## PRIVATE PESTICIDE APPLICATOR TRAINING

**Tuesday, October 3rd**  
**Extension Classrooms - Room 10**

**1103 4th Street, Floresville**

**Registration begins at 8am**  
**Training from 8:30am - 12noon**  
**Manuals & Training - \$60**

*This training is for individuals seeking a Texas Department of Agriculture (TDA) private pesticide applicator license in order to purchase/use "restricted pesticides" such as 2, 4-D, Grazon P+D, Tordon 22K, etc.  
This is not a class for CEU Hours.*



**\*\*\*YOU MUST RSVP FOR  
THIS TRAINING!\*\*\***

Please call the Wilson  
County Extension Office  
to RSVP. 830-393-7357



# Upcoming Program

*SAVE THE DATE*

## CARR RANCH GATHERING

FRIDAY, OCTOBER 13, 2023

EDUCATIONAL SEMINARS  
BEGIN AT 1:30PM

TEXAS A&M  
**AGRI**LIFE  
EXTENSION

Contact the Wilson County Extension  
Office for more information.

830-393-7357



"Texas A&M AgriLife Extension provides equal opportunities in its programs and employment to all persons, regardless of race, color, sex, religion, national origin, disability, age, genetic information, veteran status, sexual orientation, or gender identity." "The Texas A&M University System, U.S. Department of Agriculture, and the County Commissioners Courts of Texas Cooperating"